



Sponsored by the NYU Post-Graduate Medical School

NYU Hospital for Joint Diseases

# Comprehensive Spine Course

PART I - THURSDAY, NOVEMBER 8, 2012

PART II - FRIDAY, NOVEMBER 9, 2012

PART III - THURSDAY, FEBRUARY 28, 2013

PART IV - FRIDAY, MARCH 1, 2013

NYU Langone Medical Center  
Farkas Auditorium • New York, NY

# CME INFORMATION

## COURSE DESCRIPTION

There is a lack of consistency in diagnosis and treatment of spinal disorders and spinal pain among practitioners. Spine patient care can be improved by incorporating cutting edge knowledge of conservative, surgical, alternative, and rehabilitative treatments into the day-to-day practice. This four-part series is a comprehensive review of four stages of the spine care continuum: examination, evaluation and diagnosis; therapeutic interventions; spinal injections; surgical interventions. Each section will focus on common pitfalls, application of practical experience, and the comprehensive understanding of evidence based care. Patients with DDD of the spine require diagnostic tests that necessitate evaluation, interpretation and intervention. These may be acute, chronic or both. Many practitioners lack the latest knowledge and experience to properly handle the differential diagnosis and select the appropriate intervention. Physicians need to appreciate the major decision-making surrounding the use of fluoroscopically guided spinal injections for the treatment of patients with low back pain and sciatica. Peripheral joint injection techniques need to be standardized based on expert consensus opinion and hands-on experience is necessary to refine the technique. Physicians need to be aware of the injectable preparations available for patients with osteoarthritis and myofascial pain. There is a lack of consistency in diagnosis and treatment among practitioners. It is imperative that they incorporate and integrate latest knowledge and updated practical experience on the clinical presentation, natural history and management for spine degenerative disc disease. Spine patient care can be improved by incorporating cutting edge knowledge of conservative, surgical, alternative, and rehabilitative treatments into the day-to-day practice. Discussion of the return to physical, recreational, work and sports activities will be incorporated into the program. Return to sports activities for non-operative and surgical intervention will be discussed.

## TARGET AUDIENCE

Physiatrists, Neurologists, Pain Management Physicians, Rheumatologists, Sports Medicine Physicians, Primary Care Physicians, Internists, Orthopaedic Surgeons, physical therapists, chiropractors caring for patients with spinal disorders.

## STATEMENT OF NEED

**Part I:** Within examination, evaluation and diagnosis of spinal disorders and pain of the lower back and neck, there is a need for practitioners to review the basic science of the degenerative spine, as well as the myriad of evaluation options for spinal disorders. Clinicians are commonly misdiagnosing and thus mistreating pain, for instance musculoskeletal abnormalities are not being identified which require surgery. It is important that practicing clinicians treating patients with diseases incorporate MRI with physician examination in order to ensure they are properly diagnosing and thus treating.

Diagnostic accuracy and treatment of osteoporosis is important in the rehabilitation process. Practicing clinicians need to be adept at the diagnosis of osteoporosis and cognizant of the structural changes that lead to significant impairment. Appropriate medical management, including the surgical management of fractures will prevent functional impairment.

**Part II:** Within therapeutic intervention for patients with spinal disorders and pain, many times, clinicians are bypassing medication and going straight to surgery, when a better approach would be a regional focus achievable through therapeutic injections or chiropractic therapy. However, there are many options within peripheral joint injections and pharmacological therapies, all of which require up-to-date knowledge for available outcomes data as well as technique for various injections.

**Part III:** For patients who require further intervention, spinal injections, fluoroscopically guided spinal injections, interspinous devices, epidural steroid injections, facet injection blocks, sympathetic blocks, spinal cord stimulators can be utilized. However, there are safety concerns and complications associated with spinal injections that need to be addressed as well as patient expectations of relief, which may be temporary or long term relief, as well as efficacy questions regarding some of these treatments.

**Part IV:** Surgical Treatment Strategies for Cervical DDD, Lumbar Spinal Stenosis, etc is evolving to include conventional and microscopic minimally invasive approaches, which allow for faster healing. Physicians need to be aware of all of the options in order to make the best decision for their patients.

Additionally clinicians need to be aware of the new diagnostic and treatment techniques available for pediatric scoliosis care as well as the achievable surgical outcomes for adult degenerative scoliosis.

Pediatric patients with scoliosis can soon be evaluated through genetic testing which will impact diagnostic prediction of natural history and treatment. New fusionless techniques are currently being tested.

Adult scoliosis outcome studies indicate specific goals of treatment not previously known. Health Related Quality of Life outcomes and complications have been shown recently to be impacted by co-morbidities.

## EDUCATIONAL OBJECTIVES

At the conclusion of this activity, participants should be able to:

### Part I: Examination, Evaluation & Diagnosis

- Describe the role of MRI, Electrodiagnosis and non-MRI Imaging in the evaluation of spinal disorders as well as evidence-based strategies for interpreting these and other diagnostic procedures
- Develop a systematic method for physical examination of the lumbar spine, and lower extremity as well as cervical spine and upper extremity
- Identify specific lesions responsible

# FACULTY

## COURSE DIRECTOR

### Gerard P. Varlotta, DO, FACSM

Clinical Associate Professor of Physical Medicine and Rehabilitation  
Medical Director, NYU/HJD Musculoskeletal Outpatient Rehabilitation Network  
NYU School of Medicine, New York, NY

## COURSE CO-DIRECTOR

### John A. Bendo, MD

Assistant Professor of Orthopaedic Surgery  
NYU School of Medicine  
Director of Spine Services-Clinical Affairs  
NYU Hospital for Joint Diseases

## SECTION DIRECTORS

### Part I: Anthony Petrizzo, DO

### Part II: Wayne Stokes, MD

### Part III: Christopher Gharibo, MD

### Part IV: John A. Bendo, MD

## GUEST FACULTY

### Joseph Bonyai, MEd, CSCS

Empower Athletic Development, Eastchester, NY

### Scott Duke, DC, DACBSF

Duke Chiropractic, New York, NY

### Cory Gold, DC

Title?

### Brian O'Young, MD

Title?

### Antonio Valdevit, PhD

Assistant Professor  
Stevens Institute of Technology, Hoboken, NJ

## NYU SCHOOL OF MEDICINE/ HOSPITAL FOR JOINT DISEASES FACULTY

### Ludmilla Bronfin, MD

Assistant Professor of Neurology

### Steven Calvino, DO

Assistant Professor of Anesthesiology and Rehabilitation Medicine

### Dennis A. Cardone, DO

Associate Professor of Orthopaedic Surgery

### Gina Ciavarra, MD

Assistant Professor of Radiology

### Christina Drafta, MD

Assistant Professor of Neurology

### Thomas J. Errico, MD

Professor of Orthopaedic Surgery and Neurosurgery  
Chief, Division Spine Surgery

### Anthony K. Frempong-Boadu, MD

Assistant Professor of Neurosurgery  
Director, Spinal Neurosurgery  
Residency Program Director

### Michael C. Gerling, MD

Assistant Professor of Orthopaedic Surgery

### Christopher Gharibo, MD

Assistant Professor of Anesthesiology  
NYU School of Medicine  
Medical Director of Pain Medicine  
NYU Hospital for Joint Diseases

### Jeffrey A. Goldstein, MD

Clinical Associate Professor of Orthopaedic Surgery  
NYU School of Medicine  
Director of Spine Service-Education  
NYU Hospital for Joint Diseases

### Marianne T. Guschwan, MD

Clinical Assistant Professor of Psychiatry

### Stephen Honig, MD

Clinical Associate Professor of Medicine  
NYU School of Medicine  
Director, NYU Hospital for Joint Diseases  
Osteoporosis Center

### M. Fahad Kahn, MD, MHS

Assistant Professor of Anesthesiology  
and Pain Medicine

### Yong H. Kim, MD

Clinical Assistant Professor of Orthopaedic Surgery

### Kiril Kiproviski, MD

Assistant Professor of Neurology

### Jeffrey Klein, MD

Instructor of Orthopaedic Surgery

### Virginie LaFage, PhD

Director of Spinal Biomechanics Laboratory

### Angela M. Lis, PhD

Associate Clinical Director OIOC

### Baron S. Lonner, MD

Clinical Professor of Orthopaedic Surgery  
Director of NYU Hospital for Joint Diseases  
Spinal Deformity Center

### Michael B. Mechlin, MD

Assistant Professor of Radiology

### Ronald Moskovich, MD

Assistant Professor of Orthopaedic Surgery

### William Oswald, DPT, Cert. MDT

Clinical Specialist of Physical Therapy

### Mia R. Palazzo, PT, DPT, Cert. MDT

Supervisor of Physical Therapy

### Peter G. Passias, MD

Assistant Professor of Orthopaedic Surgery

### Noel I. Perin, MD, FRCS

Professor of Neurosurgery  
Director, Minimally Invasive Spinal Surgery

### Jeffrey Perry, DO

Clinical Instructor in Orthopaedic Surgery and  
Rehabilitation Medicine  
NYU School of Medicine  
Director, Osteopathic Physical Medicine and  
Rehabilitation Residency Program  
New York College for Osteopathic Medicine/  
Nassau University Medical Center  
East Meadow, NY

### Anthony Petrizzo, DO

Assistant Professor of Orthopaedic Surgery

### Themistocles S. Protopsaltis, MD

Assistant Professor of Orthopaedic Surgery

### Juan C. Robles, MD

Clinical Instructor of Rehabilitation Medicine

### Leon D. Rybak, MD

Assistant Professor of Radiology  
NYU School of Medicine  
Acting Section Chief, MSK Radiology  
NYU Hospital for Joint Diseases

### Jonathan Samuels, MD

Assistant Professor of Medicine

### Frank Schwab, MD

Clinical Associate Professor of Orthopaedic Surgery  
Director of NYU Hospital for Joint Diseases  
Spinal Deformity Service

### Matthew Smith, MD

Clinical Assistant Professor of Psychiatry

### Michael L. Smith, MD

Assistant Professor of Neurosurgery

### Jeffrey M. Spivak, MD

Assistant Professor of Orthopaedic Surgery  
NYU School of Medicine  
Director, NYU Hospital for Joint Diseases  
Spine Center

### Jonathan Stieber, MD

Assistant Professor of Orthopaedic Surgery

### Wayne Stokes, MD

Associate Professor of Rehabilitation Medicine  
Director, Sports Medicine Rehabilitation

# GENERAL INFORMATION

## Location

NYU Langone Medical Center  
Alumni Hall, Farkas Auditorium  
550 First Avenue (31st St.)  
New York, NY 10016

**PHOTO IDENTIFICATION IS REQUIRED TO ENTER THE MEDICAL CENTER**

## Online Registration Preferred

Applications will be accepted in order of their receipt. In order to reserve your seat, please register in advance, as on-site registration is not guaranteed. An email confirmation will be sent confirming your registration. Written confirmation will not be mailed.

Visit our secure website

<http://cme.med.nyu.edu/spine>  
to submit online registration.

**PLEASE NOTE:** We cannot accept telephone or email registration.

## Mailing Address and Contact Information:

Registration Office  
NYU Post-Graduate Medical School  
P.O. Box 1855  
Murray Hill Station  
New York, NY 10016  
Phone: (212)263-5295  
Fax: (212)263-5293

## Accreditation Statement

The NYU Post-Graduate Medical School is accredited by the Accreditation Council for Continuing Medical Education to provide continuing medical education for physicians.

## Credit Designation Statement

The NYU Post-Graduate Medical School designates this live activity for a maximum of 28.5 *AMA PRA Category 1 Credits*<sup>™</sup>. Physicians should claim only the credit commensurate with the extent of their participation in the activity.

## Physical Therapy Credit

NYU Hospitals Center is a New York State Education Department approved provider for physical therapy and physical therapy assistant continuing education. This course is approved for a maximum of XX physical therapy/physical therapy assistant contact hours.

## Chiropractic Credit

The New York Chiropractic College designates this activity for a maximum of 28.50 CE Credit Hours.

- 11/8-9/12: 14.25 credits
- 2/28-3/1/13: 14.25 credits

Only New York State licensed Chiropractors are eligible for CE Credit. A fee of \$35.00 per weekend will be assessed by NYCC upon request for CE credits.

**LICENSE RENEWAL:** While applications relating to credit hours for license renewal in selected states have been executed for these programs, it remains attendees' responsibility to contact the state board(s) from whom they seek continuing education credits for purposes of ensuring said board(s) approve both venue and content as they relate to any seminar/course/lecture/webinar/online presentation (event). Neither a speaker's or exhibitor's presence at said event, nor product mention or display, shall in any way constitute NYCC endorsement. NYCC's role is strictly limited to processing, submitting, and archiving program documents on behalf of course sponsors.

## NYU Post-Graduate Medical School Disclosure Statement

The NYU Post-Graduate Medical School adheres to ACCME Essential Areas and policies, including the Standards for Commercial Support regarding industry support of continuing medical education. In order to resolve any identified Conflicts of Interest, disclosure information is provided during the planning process to ensure resolution of any identified conflicts. Disclosure of faculty and commercial relationships as well as the discussion of unlabeled or unapproved use of any drug, device or procedure by the faculty will be fully noted at the meeting.

## Hotel Accommodations

Rooms are in very heavy demand in New York City; we urge you to make your reservations early. You may obtain a list of hotels located near NYU School of Medicine by visiting our website: <http://cme.med.nyu.edu/travel>

## Parking

Parking is available on 29th and 30th Streets between First and Second Avenues, as well as at the Schwartz Health Care Center garage on First Avenue and 30th Street. For more information, please visit our website: <http://med.nyu.edu/directions-parking>

**PLEASE NOTE:** We cannot validate parking for registrants.

# PROGRAM SCHEDULE

## Thursday, November 8, 2012

### PART I: EXAMINATION, EVALUATION & DIAGNOSIS

Section Director: Anthony Petrizzo, DO

7:15am Registration & Continental Breakfast

8:00 Welcome  
*Thomas Errico, MD*

### Basic Science & Spinal Assessment

Moderator: Anthony Petrizzo, DO

8:10 Basic Science of the Degenerative Spine  
*Anthony Petrizzo, DO*

8:30 Differential Diagnosis of Cervical & Lumbar Spine Disorders  
*Michael C. Gerling, MD*

8:50 Examination & Evaluation of Neck Pain  
*Jonathan Stieber, MD*

9:05 Examination & Evaluation of Lower Back Pain  
*Jeffrey Perry, DO*

9:20 Examination & Evaluation of Cervical, Thoracic & Lumbar Radiculopathy  
*Kiril Kiprovski, MD*

9:35 Coffee Break

Moderator: Gerard P. Varlotta, DO, FACSM

10:00 Biomechanics of the Spine: Clinical Relevance  
*Antonio Valdevit, PhD*

10:15 Posture, Balance in Spinal Disorders  
*Virginie LaFage, PhD*

10:30 Chiropractic Assessment of Patients with Spinal Pain  
*Scott Duke, DC, DACBSF*

10:50 Evaluation of Adolescent Scoliosis  
*Baron S. Lonner, MD*

11:10 Evaluation of Adult Scoliosis  
*Frank Schwab, MD*

11:30 Measurement of the Scoliosis Curve  
*Baron S. Lonner, MD & Frank Schwab, MD*

11:45 Ergonomic & Work Assessment: Translating Research into Clinical Practice  
*Angela M. Lis, PhD*

12:00 Questions & Discussion

12:15 Lunch

### Spinal Imaging

Moderator: Leon D. Rybak, MD

1:15 Non-MRI Imaging & Evaluation of Cervical & Lumbar Spine: Utilization of X-Rays, CT Scan, Nuclear Medicine & Ultrasound  
*Gina Ciavarra, MD*

1:35 MRI Evaluation of Cervical & Lumbar Spine Disorders: What to Look for  
*Michael B. Mechlin, MD*

1:55 Clinical Findings & Imaging Correlation  
*Leon D. Rybak, MD*  
*Gerard P. Varlotta, DO, FACSM*

2:15 Case Discussion & Interpretation of MRI Scans  
*Gina Ciavarra, MD; Michael B. Mechlin, MD & Leon D. Rybak, MD*

3:15 Coffee Break

### Medical & Neurological Assessment

Moderator: Jeffrey Perry, DO

3:40 Electrodiagnostic Testing in Spinal Disorders: When to Order & How to Interpret the Report  
*Christina Drafta, MD*

4:00 Interventional Diagnostic Procedures: Nerve Blocks & Discography  
*Steven Calvino, DO*

4:15 Diagnosis of Osteopenia & Osteoporosis  
*Stephen Honig, MD*

4:35 Natural History, Signs & Symptoms: Rheumatic Diseases & Myofascial Pain  
*Jonathan Samuels, MD*

4:55 Neurological Diagnoses that Mimic Spinal Disorders  
*Ludmilla Bronfin, MD*

5:15 Questions & Discussion

5:30pm Adjourn

## Friday, November 9, 2012

### PART II: THERAPEUTIC INTERVENTION

Section Director: Wayne Stokes, MD

7:00am Registration & Continental Breakfast

7:50 Welcome  
*Steven Flanagan, MD*

### Pharmacological Management

Moderator: Wayne Stokes, MD

8:00 Therapeutic Approach to Spinal Disorders  
*Gerard P. Varlotta, DO, FACSM*

8:15 Pharmacological Management of Spinal Pain with Non-opioids  
*Juan C. Robles, MD*

8:35 Optimizing Opioid Treatment in the Spine Patient  
*Christopher Gharibo, MD*

8:55 Opioids in the Patient with History of Dependence & Addiction  
*Marianne T. Guschwan, MD*

9:15 Pharmacological Management of Osteoporosis  
*Stephen Honig, MD*

9:35 Questions & Discussion

9:50 Coffee Break

### Alternative Management & Functional Assessment

Moderator: ??

10:10 Non-operative Treatment of Cervical Myelopathy & Radiculopathy  
*Wayne Stokes, MD*

10:30 Alternative Medicine Treatment in Spinal Disorders: Application of Science to the Art  
*Brian O'Young, MD*

10:50 Psychosocial Management of the Patient with Chronic Lower Back Pain  
*Matthew Smith, MD*

11:10 Functional Restoration, Work Hardening & Return to Work Programs  
*Angela M. Lis, PhD*

11:30 Assessment of Disability  
*Juan C. Robles, MD*

11:45 Questions & Discussion

12:00 Lunch

### Therapeutic Application

Moderator: Gerard P. Varlotta, DO, FACSM

1:00 Physical Therapy for Cervical Spine Disorders  
*William Oswald, DPT, Cert. MDT*

1:20 Physical Therapy for Lumbar Spine Disorders  
*Mia R. Palazzo, PT, DPT, Cert. MDT*

1:40 Chiropractic Therapy for Spinal Disorders: Principles & Application of Manipulation  
*Cory Gold, DC*

2:00 Chiropractic Therapy for Spinal Disorders: Principles & Application of Active Release Therapy  
*Scott Duke, DC, DACBSF*

2:20 Physical Training of Athletes with Spinal Disorders  
*Joseph Bonyai, MEd, CSCS*

3:10 Return to Sports Participation with Spinal Disorders  
*Joseph Bonyai, MEd, CSCS*

3:30 Coffee Break

### Case Discussions

Moderator: Gerard P. Varlotta, DO, FACSM  
Presenter: Wayne Stokes, MD

3:45 Case Discussion: Cervical Spine Disorders

4:15 Case Discussion: Lumbar Spine Disorders

4:45 Case Discussion: Return to Sports

5:15pm Adjourn

## Thursday, February 28, 2013

### PART III: THERAPEUTIC INTERVENTION: SPINAL & PERIPHERAL INJECTIONS Section Director: Christopher Gharibo, MD

7:00am Registration & Continental Breakfast

7:50 Welcome  
*Thomas J.J. Blanck, PhD, MD*  
*Professor and Chairman of Anesthesiology*

**Moderator: Christopher Gharibo, MD**

- 8:00 How to Incorporate Injections into a Multidisciplinary Plan of Care  
*Gerard P. Varlotta, DO, FACS*
- 8:20 Diagnostic & Therapeutic Value of Spinal Injections  
*Juan C. Robles, MD*
- 8:40 Spinal Injection Mechanisms of Injury: Avoidable & Unavoidable  
*Christopher Gharibo, MD*
- 9:00 Radiation Safety  
*Steven Calvino, DO*
- 9:15 Questions & Discussion
- 9:30 Coffee Break
- 9:45 Trigger Point Injections: Indications & Technique  
*Jeffrey Perry, DO*
- 10:05 Sacroiliac Injections: Indications & Technique  
*Wayne Stokes, MD*
- 10:20 Peripheral Joint Injections: Indications & Technique  
*Dennis A. Cardone, DO*
- 10:40 Botulinum Toxin Injections for Myofascial Pain  
*Christina Drafta, MD*
- 10:55 Decompressor, MILD, Percutaneous Fusion: Are These Valid Treatment Options?  
*Yong H. Kim, MD*
- 11:10 When Steroids Fail: Role of Sympathetic Blocks in Spinal Pain  
*Christopher Gharibo, MD*
- 11:25 Indications & Efficacy of Spinal Cord Stimulators in Chronic Spinal Pain  
*Yong H. Kim, MD*
- 11:40 Questions & Discussion
- 12:00 Lunch

**Moderator: Gerard P. Varlotta, DO, FACS**

- 1:00 Interlaminar vs. Transforaminal vs. Caudal Epidural Steroids: Implications of the Techniques  
*Christopher Gharibo, MD*
- 1:30 Intra-articular Facet Injections & Therapeutic Approaches to Spinal Cysts  
*Gerard P. Varlotta, DO, FACS*
- 2:00 Medial Branch Blocks & Radiofrequency Rhizotomy  
*Fahad Kahn, MD*
- 2:20 Coffee Break

### Case Discussions: Indications & Injection Technique

**Moderator: Christopher Gharibo, MD**  
**Presenter: Wayne Stokes, MD**

- 2:40 Epidural Steroid Injections: Cervical
- 3:10 Epidural Steroid Injections: Lumbar
- 3:30 Facet Blocks: Intra-articular & Cysts
- 3:50 Medial Branch Block & Rhizotomy
- 4:10 Questions & Discussion
- 4:30pm Adjourn

## Friday, March 1, 2013

### PART IV: SURGICAL INTERVENTION Section Director: John A. Bendo, MD

7:00am Registration & Continental Breakfast

7:50 Welcome  
*Joseph Zuckerman, MD*  
*Walter A.L. Thompson Professor and Chairman of Orthopaedic Surgery*

**Moderator: John A. Bendo, MD**

- 8:00 Introduction to Surgical Management of Spinal Disorders  
*Thomas Errico, MD*
- 8:10 Surgical Approach to Disc Herniation: Open vs Endoscopic  
*Michael L. Smith, MD*
- 8:30 Minimally Invasive Approaches to Spinal Fusions  
*Noel I. Perin, MD*

### Lumbar Spine Disorders

**MODERATOR: Jeffrey M. Spivak, MD**

- 8:50 Surgical Treatment of Spinal Stenosis  
*Jeffrey Klein, MD*
- 9:10 Surgical Treatment of Spondylolisthesis: Degenerative vs Isthmic  
*Jeffrey M. Spivak, MD*
- 9:30 Lumbar Total Disc Replacement Surgery  
*John A. Bendo*
- 9:50 Questions & Case Discussions
- 10:10 Coffee Break

### Surgical Treatment of Spinal Deformity

**Moderator: Thomas Errico, MD**

- 10:30 Overview of Spinal Deformity Surgery  
*Thomas Errico, MD*
- 10:50 Operative Management of Pediatric Deformity  
*Baron S. Lonner, MD*
- 11:10 Surgical Treatment of Adult Spinal Deformity: Kyphosis & Scoliosis  
*Frank Schwab, MD*
- 11:30 Questions & Case Discussions
- 12:00 Lunch

### Cervical Spine Disorders

**Moderator: Michael L. Smith, MD**

- 1:00 Cervical Radiculopathy vs Peripheral Nerve Entrapment: Diagnosis & Treatment  
*Themistocles S. Protopsaltis, MD*
- 1:20 Surgical Approaches to Cervical Disc Herniation: Anterior vs Posterior  
*Jonathan Stieber, MD*
- 1:40 Operative Treatment of Cervical Spondylolytic Myelopathy & OPLL  
*John A. Bendo, MD*
- 2:00 Surgical Management of the Rheumatoid Spine  
*Ronald Moskovich, MD*
- 2:20 Cervical Total Disc Replacement  
*Jeffrey A. Goldstein, MD*
- 2:40 Questions & Case Discussions
- 3:00 Coffee Break

### Traumatic & Atraumatic Spinal Surgery

**Moderator: Anthony K. Frempong-Boadu, MD**

- 3:20 Surgical Indications in Spinal Trauma  
*Themistocles S. Protopsaltis, MD*
- 3:40 Osteoporotic Compression Fractures: Non-Operative vs Surgical Treatment  
*Peter Passias, MD*
- 4:00 Surgical Management of Metastatic & Spinal Cord Tumors  
*Anthony K. Frempong-Boadu, MD*
- 4:20 Questions & Case Discussions
- 5:00pm Adjourn

# REGISTRATION FORM

## COMPREHENSIVE SPINE COURSE #807

NYU Langone Medical Center, 550 First Avenue, New York, NY 10016

Register online at <http://cme.med.nyu.edu/spine>

After 12pm on November 5, 2012, only on-site registration will be available for Parts I & II provided the course has not reached capacity. After 12pm on February 25th, 2013, only on-site registration will be available for Parts III & IV provided the course has not reached capacity. On-site registrants will incur an additional \$20 charge and will receive a receipt by email in 1-2 weeks.

### I am registering for:

- Part I – Examination, Evaluation & Diagnosis, November 8, 2012  
 Part II – Therapeutic Intervention, November 9, 2012  
 Part III – Therapeutic Intervention: Spinal & Peripheral Injections, February 28, 2013  
 Part IV – Surgical Intervention, March 1, 2013

PLEASE PRINT CLEARLY IN BLOCK LETTERS AND NUMBERS

Name \_\_\_\_\_  
FIRST M.I. LAST

Address \_\_\_\_\_

City \_\_\_\_\_ State \_\_\_\_\_ Zip \_\_\_\_\_

Day Phone \_\_\_\_\_ Fax \_\_\_\_\_

E-mail \_\_\_\_\_

(REQUIRED FOR CME CREDIT)

## COURSE FEES

FEE TYPE	PARTS I-IV	PER PART	FEE TYPE	PARTS I-IV	PER PART
• Physicians	\$500	\$150	• Chiropractor & PT	\$XXX	\$XX
• Reduced Fee*	\$300	\$75	• MRN	\$150	\$32.50

\*Reduced fee applies to NYU School of Medicine alumni, former residents and fellows; MD's employed by the Department of Veterans Affairs Medical Center; full-time active military personnel; nurse practitioners; and all other non-MD healthcare professionals.

**COURSE CONFIRMATION:** Please supply your email address to receive a confirmation letter. Written confirmation will not be mailed. Make sure your email address is clearly written.

**REFUND POLICY:** An administrative charge of 30% of your tuition payment will be assessed for cancellations prior to **October 25, 2012 (Parts I&II)/February 18th, 2013(Parts III&IV)**. Cancellations must be in writing and postmarked no later than the above date (faxes and emails are not accepted). Cancellations will not be accepted after the above date.

**COURSE CANCELLATION POLICY:** In the unusual circumstance that this course is cancelled, two weeks notice will be given and tuition will be refunded in full. The NYU Post-Graduate Medical School is not responsible for any airfare, hotel or other costs incurred.

### METHODS OF PAYMENT: (cash and phone registration are not accepted)

If faxing, do not mail or refax, this will only result in a duplicate charge to your account.

Check in U.S. Dollars only: \$ \_\_\_\_\_

Credit Card Payment (see below)

International Postal Money Order: \$ \_\_\_\_\_

Foreign registrants, including those from Canada, must pay by International Postal Money Order or credit card.

### PAYMENT BY CREDIT CARD

Credit card payments may be faxed to (212) 263-5293

Amount to be charged: \$ \_\_\_\_\_

Bill to:  Visa  MasterCard  American Express

Credit Card Number: \_\_\_\_\_

Card Member's Name: \_\_\_\_\_

Exp Date: \_\_\_\_\_ CVV Code: \_\_\_\_\_

Signature: \_\_\_\_\_

**MAKE CHECK PAYABLE TO:**  
NYU Post-Graduate Medical School

 Special Needs or requests:

### SEND TO:

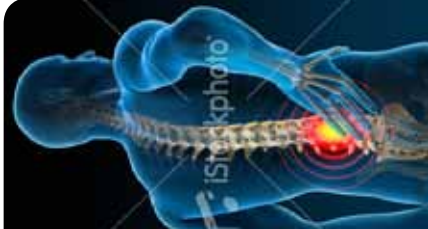
Registration Office  
NYU Post-Graduate Medical School  
P.O. Box 1855  
Murray Hill Station  
New York, N.Y. 10016

\_\_\_\_\_  
\_\_\_\_\_  
\_\_\_\_\_  
\_\_\_\_\_



Post Graduate Medical School  
545 First Avenue, New York, NY 10016

Non-Profit Org  
US Postage  
PAID  
New York, NY  
Permit #8167



## Comprehensive Spine Course

Part I - Thursday, November 8, 2012

Part II - Friday, November 9, 2012

Part III - Thursday, February 28, 2013

Part IV - Friday, March 1, 2013

**Register online at: <http://cme.med.nyu.edu/spine>**